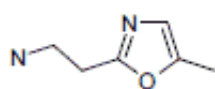
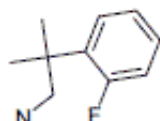


2015 Spotlight: Novel Off-the-shelf Aliphatic Primary Amines from OTAVA

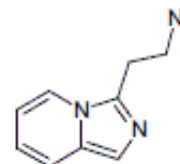
As a Director of OTAVA I am pleased to offer you **our novel off-the-shelf aliphatic primary amines**:



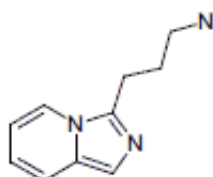
Cat. number **1036144**
MW **126.2** CAS# **N/A**
price for **250 mg** is **180USD**
price for **1000 mg** is **399USD**



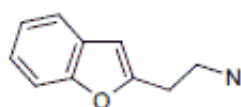
Cat. number **1059667**
MW **167.2** CAS# **160358-03-2**
price for **250 mg** is **90USD**
price for **1000 mg** is **199USD**



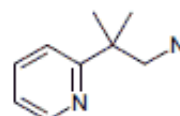
Cat. number **1143981**
MW **161.2** CAS# **792128-14-4**
price for **250 mg** is **180USD**
price for **1000 mg** is **399USD**



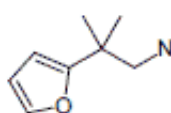
Cat. number **1143983**
MW **175.2** CAS# **N/A**
price for **250 mg** is **135USD**
price for **1000 mg** is **299USD**



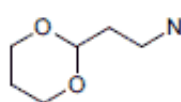
Cat. number **1178796**
MW **161.2** CAS# **N/A**
price for **250 mg** is **202USD**
price for **1000 mg** is **449USD**



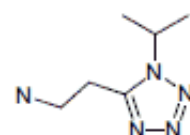
Cat. number **1287133**
MW **150.2** CAS# **199296-39-4**
price for **250 mg** is **202USD**
price for **1000 mg** is **449USD**



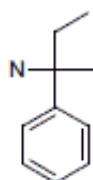
Cat. number **1287136**
MW **139.2** CAS# **N/A**
price for **250 mg** is **202USD**
price for **1000 mg** is **449USD**



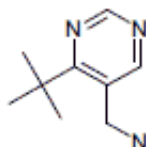
Cat. number **1655109**
MW **131.2** CAS# **N/A**
price for **250 mg** is **135USD**
price for **1000 mg** is **299USD**



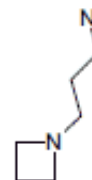
Cat. number **2202551**
MW **155.2** CAS# **N/A**
price for **250 mg** is **120USD**
price for **1000 mg** is **259USD**



Cat. number **2248137**
MW **149.2** CAS# **N/A**
price for **250 mg** is **159USD**
price for **1000 mg** is **345USD**



Cat. number **4050860**
MW **165.2** CAS# **N/A**
price for **250 mg** is **290USD**
price for **1000 mg** is **645USD**



Cat. number **5980497**
MW **114.2** CAS# **N/A**
price for **250 mg** is **180USD**
price for **1000 mg** is **399USD**

OTAVA offers about **10,000 featured chemical building blocks** with many unique structures in multi-gram quantities and purity higher than 95%. These compounds are in stock and they are available for prompt delivery.

Our current portfolio of **Building Blocks includes** Active Halides - Alcohols - Aldehydes - Amines (aliphatic: primary, secondary and aromatic: primary, secondary) - Unnatural amino acids - Carboxylic acids (aliphatic and aromatic) - Hydrazines and hydrazides - Ketones - Nitriles - Nitro compounds - Phenols - Sulfonic acids - Sulfonyl halides - Thioles - Other Reactive Intermediates.

[Download our catalogue of chemical building blocks for prompt delivery \(Zip-archive, 10Mb\)](#)

Looking for different compounds? Please see our **[Custom Synthesis Services](#)**

Feel free to contact me if you are interested to obtain these compounds or if you need more information. I am looking forward to your reply.

Best regards,
Andriy Dmytrenko, MBA
Director of Business Development and Marketing

OTAVA Ltd.
Tel.: 1-416-549-8030
Fax: 1-866-881-9921 (Toll-free in US & Canada)
info@otavachemicals.com
north.america@otavachemicals.com

